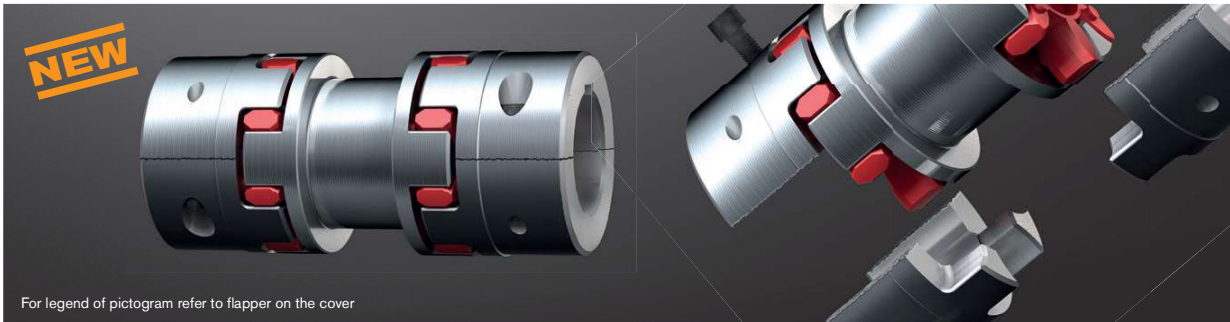
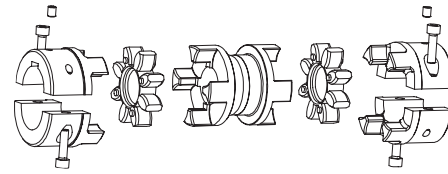
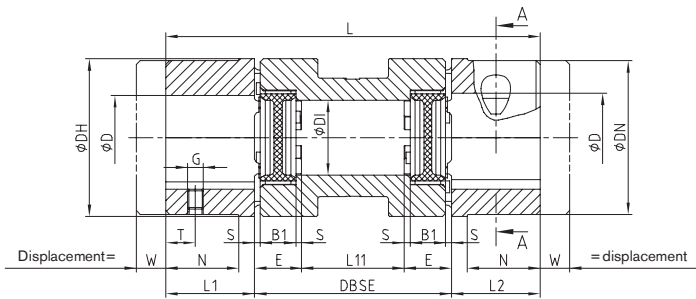


# ROTEX® ZS-DKM-SH Flexible jaw couplings

## Double-cardanic shaft coupling with SPLIT hubs



For legend of pictogram refer to flapper on the cover



ROTEX® type ZS-DKM-SH																							
Size <sup>3)</sup>	Spider 98 ShA-GS T <sub>KN</sub> [Nm] <sup>1)2)</sup>	Drop-out center length DBSE	Finish bore D		Dimensions [mm]													Screws DIN EN ISO 4762		Max. displacements			
			min.	Max.	DH	DN	DK	DI	L1, L2	L11	E	B1	S	L	G	W	MxLM	T <sub>A</sub> [Nm]	Axial [mm]	with n = 1500 rpm		with n = 3000 rpm	
																				Radial [mm]	Angular [°]	Radial [mm]	Angular [°]
19	10	42 <sup>5)</sup>	0	24	40	-	-	18	25	10	16	12	2.0	92	-	-	-	1.2	0.45	-	-	-	
		52 <sup>5)</sup>																	0.59	-	-		
24	35	100	0	28	55	-	57.5	27	30	64	18	14	2.0	160	M5	12	M6x20	14	1.4	1.43	1.07	-	-
		140																		2.13	1.60	-	
		58 <sup>5)</sup>																		0.66	-	-	
28	95	100	0	38	65	-	73	30	35	60	20	15	2.5	170	M8	12	M8x25	34	1.5	1.40	1.05	-	-
		140																		2.10	1.57	-	
		68 <sup>5)</sup>																		0.77	-	-	
38	190	100	24	45	80	78	83.5	38	45	52	24	18	3.0	190	M8	15	M8x30	34	1.8	1.33	0.99	-	-
		140																		2.02	1.52	-	
		74 <sup>5)</sup>																		0.84	-	-	
42	265	100	24	55	95	94	97	46	50	48	26	20	3.0	200	M8	15	M10x35	67	2.0	1.29	0.97	-	-
		140																		2.00	1.49	-	
		80 <sup>5)</sup>																		0.91	-	-	
48	310	100	24	60	105	104	108.5	51	56	44	28	21	3.5	212	M8	15	M12x40	115	2.1	1.26	0.94	-	-
		140																		1.95	1.47	0.75	
		88 <sup>5)</sup>																		1.01	-	-	
55	410	100	24	70	120	118	122	60	65	40	30	22	4.0	230	M10	15	M12x45	115	2.2	1.22	0.92	-	-
		140																		1.92	1.44	-	
		180																		2.62	1.96	-	
65	625	140	24	80	135	135 <sup>6)</sup>	132.5 <sup>6)</sup>	68	75	70	35	26	4.5	290	M10	15	M12x40	115	2.6	1.83	1.37	-	-
		180																		2.53	1.90	-	
		116 <sup>5)</sup>																		1.33	-	-	
75	1280	140	40	90	160	160 <sup>6)</sup>	158 <sup>6)</sup>	80	85	100	40	30	5.0	350	M10	20	M16x50	290	3.0	1.75	1.31	-	-
		200																		2.44	1.83	-	
		250																		2.79	2.09	-	
90	2400	130 <sup>5)</sup>	40	110	200	200 <sup>6)</sup>	197 <sup>6)</sup>	100	100	40	45	34	5.5	420	M12	30	M20x60	560	3.4	3.67	2.75	-	-
		180																		1.48	1.76	-	
		250																		2.36	1.76	2.68	

<sup>1)</sup> Maximum torque of coupling T<sub>K max</sub> = rated torque of coupling T<sub>KN</sub> x 2

<sup>2)</sup> Mathematically transmittable torque with double-cardanic types acc. to 92 ShA-GS using the higher quality spiders 98 ShA-GS

<sup>3)</sup> ROTEX®-SPLIT hub material sizes 24 and 28 = sintered steel; hub material sizes 38 to 90 = EN-GJL

<sup>4)</sup> Hub type 7.1 = SPLIT hub with feather keyway and thread for setscrews

<sup>5)</sup> Material spacer Al-H

<sup>6)</sup> ØDN and ØDK depending on finish bore ØD, see page 47

The max. permissible circumferential speed for double-cardanic ROTEX® DKM and ZS-DKM-SH coupling is 20m/s, with higher speeds please consult with KTR.

Spiders ROTEX® 98 ShA-GS and 64 ShD-GS applicable, while the transmittable torque [T<sub>KN</sub>; T<sub>Kmax</sub>] of the 92 ShA-GS spider must not be exceeded.

Ordering example:	ROTEX® 38	ZS-DKM-SH	140	98 ShA-GS	7.1 <sup>4)</sup>	Ø 38	7.1 <sup>4)</sup>	Ø30
	Coupling size	Type	Shaft distance di- mension DBSE	Spider hard- ness	Hub type	Finish bore	Hub type	Finish bore