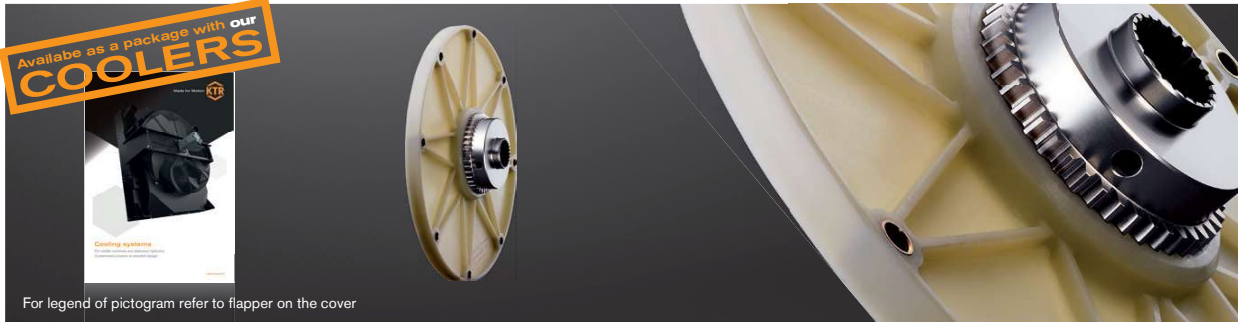
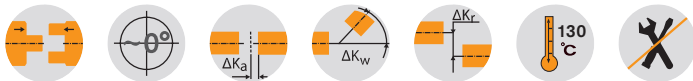


Axial plug-in, maintenance-free, torsionally stiff



For legend of pictogram refer to flapper on the cover



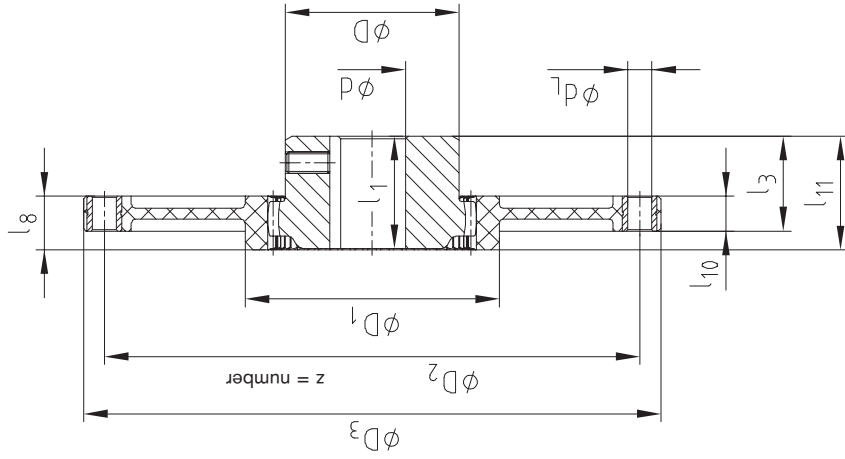
BoWex® FLE-PA – Dimensions/nominal dimension acc. to SAE																			
Size	Pilot bore	Finish bore d		Dimensions [mm]								Special length l1 max.	Nominal size acc. to SAE (D3)						Max. axial displacement [mm]
		min.	Max.	D	D1	l1	l3	l7	l8	l10	l11		6 1/2"	7 1/2"	8"	10"	11 1/2"	14"	
48	-	20	48	68	100	50	41	50	20	13	48	up to 60	●	●	●	●		± 2	
T 48	13	15	48	68	100	50	38	45	20	13	46	-	●	●	●	●		± 1	
T 55	17	20	55	85	115	50	37	48	24	13	48	-	●	●	●	●		± 2	
65 / T 65	21	30	65	96	132	55	45	54	27	21	51	up to 70			●	●	●	± 2	
T 70	26	30	70	100	153	60	48	56	30	21	57	-				●	●	± 2	
80 / T 80	31	35	90	124	170	90	78	87	30	21	87	-				●	●	± 2	
100 / T 100	38	40	100	152	265	110	78	108	35	21	110	-					●	●	± 2
125 / T 125	45	50	125	192	250	140	113	140	50	28	97	-					●	●	± 2

Special flange dimensions see page 230 et seqq. and on request

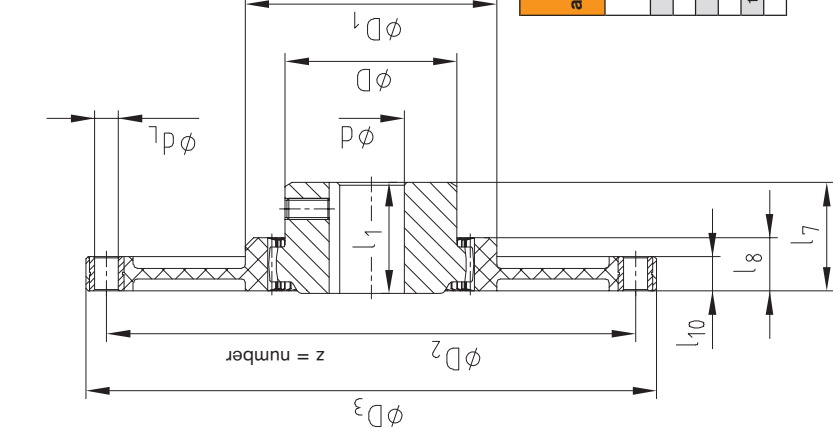
Technical data of BoWex® FLE-PA – Torques/weights/mass moments of inertia/torsion spring stiffness															
Size	Torque TK [Nm]			Weight/mass moment of inertia J	Hub with max. bore	FLE-PA flanges according to SAE						Dynamic torsion spring stiffness with +60 °C/ψ = 0.4 [Nm/rad]			
	TKN	TK max.	TKW			6 1/2"	7 1/2"	8"	10"	11 1/2"	14"	0.30 TKN	0.50 TKN	0.75 TKN	1.00 TKN
48	240	600	120	[kg] [kgm²]	0.79 0.0007	0.32 0.0021	0.43 0.0035	0.51 0.0049	0.64 0.0085	-	-	35 x 10³	75 x 10³	105 x 10³	125 x 10³
T 48	300	750	150	[kg] [kgm²]	0.79 0.0007	0.32 0.0021	0.43 0.0035	0.51 0.0049	0.64 0.0085	-	-	40 x 10³	86 x 10³	120 x 10³	143 x 10³
T 55	450	1125	225	[kg] [kgm²]	1.20 0.0016	0.34 0.0022	0.62 0.0053	0.45 0.0044	0.646 0.0086	-	-	90 x 10³	140 x 10³	170 x 10³	195 x 10³
65	650	1600	325	[kg] [kgm²]	1.50 0.0027	-	-	0.63 0.0064	0.64 0.0065	0.89 0.012	-	110 x 10³	160 x 10³	200 x 10³	230 x 10³
T 65	800	2000	400	[kg] [kgm²]	1.60 0.0035	-	-	0.63 0.0064	0.64 0.0065	0.89 0.012	-	130 x 10³	190 x 10³	240 x 10³	280 x 10³
T 70	1000	2500	500	[kg] [kgm²]	2.60 0.0059	-	-	-	0.941 0.0132	-	-	165 x 10³	315 x 10³	345 x 10³	368 x 10³
80	1200	3000	600	[kg] [kgm²]	5.20 0.0151	-	-	-	1.05 0.015	1.12 0.022	-	200 x 10³	410 x 10³	580 x 10³	700 x 10³
T 80	1500	3750	750	[kg] [kgm²]	5.20 0.0151	-	-	-	1.05 0.015	1.12 0.022	-	240 x 10³	450 x 10³	638 x 10³	770 x 10³
100	2050	5150	1025	[kg] [kgm²]	9.37 0.0401	-	-	-	-	1.16 0.021	8.45 0.234	500 x 10³	700 x 10³	856 x 10³	950 x 10³
T 100	2500	6250	1250	[kg] [kgm²]	9.37 0.0401	-	-	-	-	1.16 0.021	8.45 0.234	600 x 10³	830 x 10³	960 x 10³	1070 x 10³
125	4250	10700	2125	[kg] [kgm²]	19.73 0.1359	-	-	-	-	2.09 0.043	9.85 0.306	1280 x 10³	1885 x 10³	2280 x 10³	2665 x 10³
T 125	5300	13250	2650	[kg] [kgm²]	19.73 0.1359	-	-	-	-	2.09 0.043	9.85 0.306	1600 x 10³	2250 x 10³	2700 x 10³	3200 x 10³

Mounting procedure, screw type with property class, tightening torques as per KTR assembly instructions (see www.ktr.com).

Short mounting version



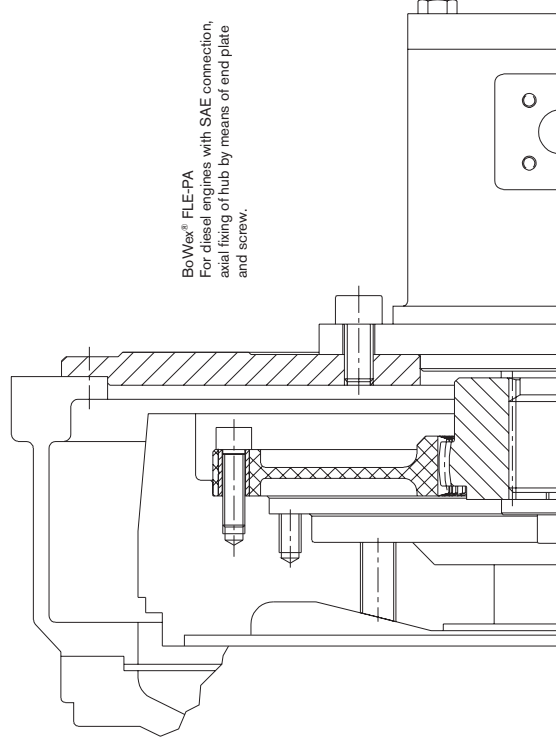
Long mounting version



Flange dimensions according to SAE J620 [mm]

Size	D3	D2	z	dL
6 1/2"	215.9	200.02	6	9
7 1/2"	241.3	222.25	8	9
8"	263.52	244.47	6	11
10"	314.32	295.27	8	11
11 1/2"	352.42	333.37	8	11
14"	466.72	438.15	8	13

Example of installation



BoWex® FLE-PA  
For diesel engines with SAE connection,  
axial fixing of hub by means of end plate  
and screw.